

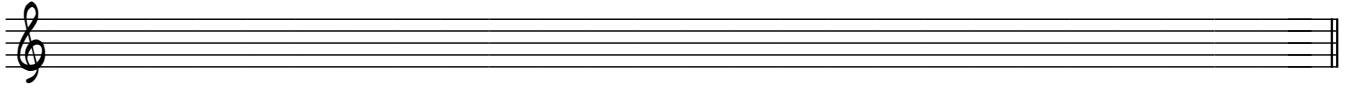
# Skalaer - opgave 1

Navn \_\_\_\_\_

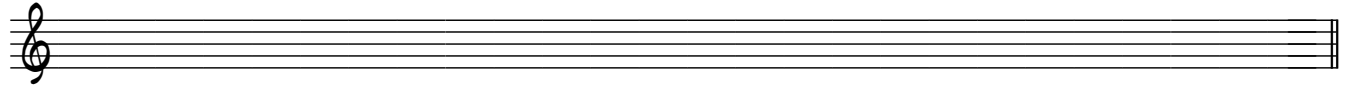
## Opgave 1:

Notér de følgende molskalaer, idet du skal benytte skalaens korrekte **faste** fortegn.  
Herefter skal du så tilføje løse fortegn.

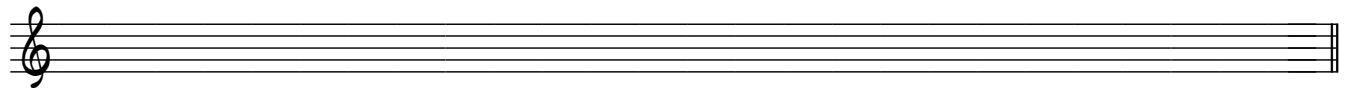
D-mol, melodisk



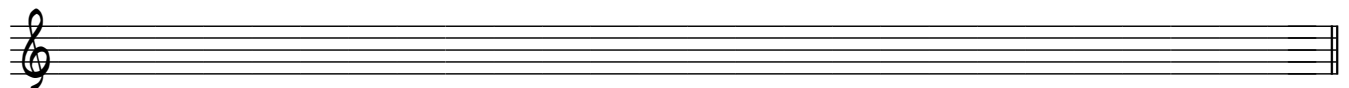
F-mol, melodisk



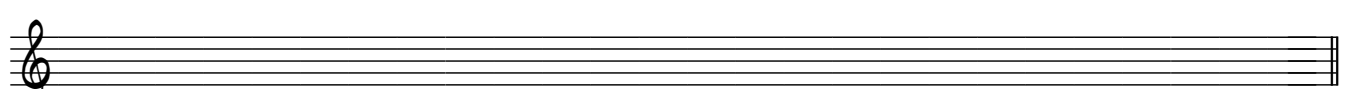
G-mol, melodisk



C#-mol, harmonisk



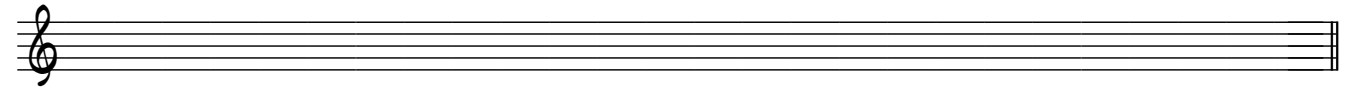
A-mol, harmonisk



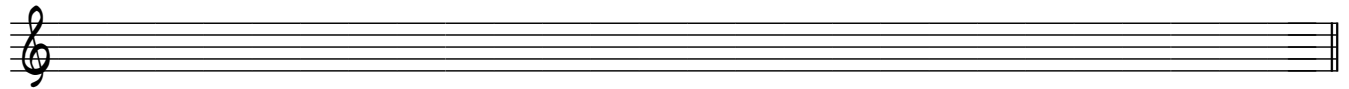
## Opgave 2:

Notér de følgende kirketonearter.  
Brug kun løse fortegn.

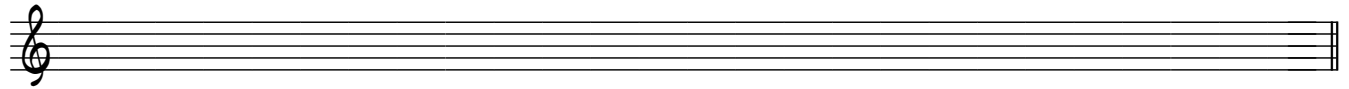
A-dorisk



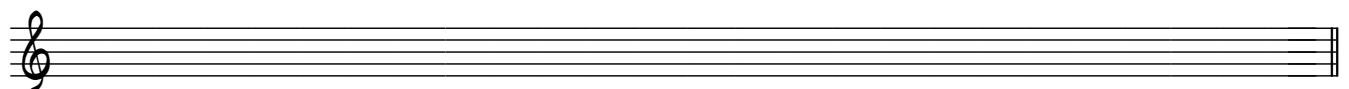
G-lydisk



F-mixolydisk



F-dorisk



D-lydisk

