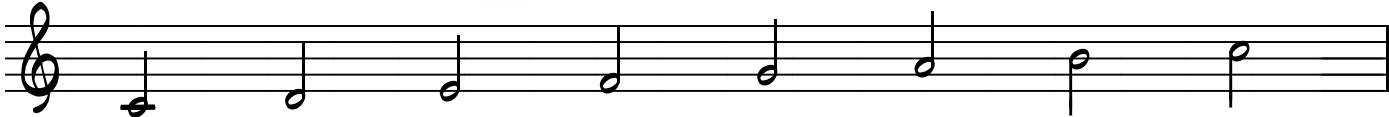


Molskalaer

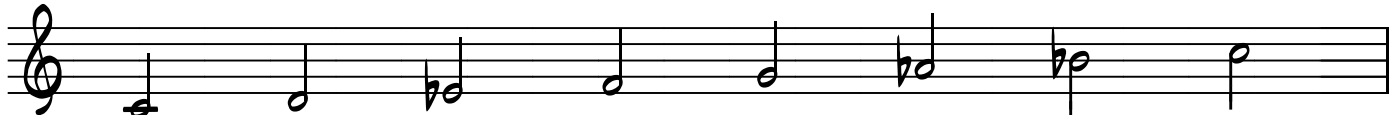
DUR



trin: 1 2 3 4 5 6 7 8

The Dur scale is shown on a treble clef staff with a key signature of one sharp (F#). The notes are: C4 (quarter), D4 (quarter), E4 (quarter), F#4 (quarter), G4 (quarter), A4 (quarter), B4 (quarter), and C5 (half).

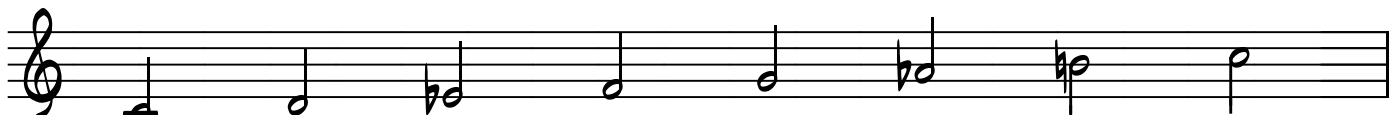
REN MOL



trin: 1 2 b3 4 5 b6 b7 8

The Ren Mol scale is shown on a treble clef staff with a key signature of one sharp (F#). The notes are: C4 (quarter), D4 (quarter), E4 (quarter with a flat), F#4 (quarter), G4 (quarter), A4 (quarter with a flat), B4 (quarter with a flat), and C5 (half).

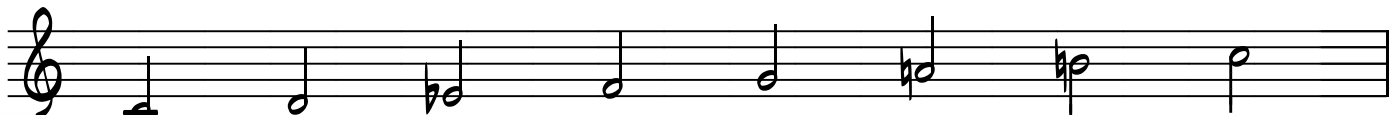
HARMONISK MOL



trin: 1 2 b3 4 5 b6 7 8

The Harmonisk Mol scale is shown on a treble clef staff with a key signature of one sharp (F#). The notes are: C4 (quarter), D4 (quarter), E4 (quarter with a flat), F#4 (quarter), G4 (quarter), A4 (quarter with a flat), B4 (quarter), and C5 (half).

MELODISK MOL



trin: 1 2 b3 4 5 6 7 8

The Melodisk Mol scale is shown on a treble clef staff with a key signature of one sharp (F#). The notes are: C4 (quarter), D4 (quarter), E4 (quarter with a flat), F#4 (quarter), G4 (quarter), A4 (quarter), B4 (quarter with a flat), and C5 (half).

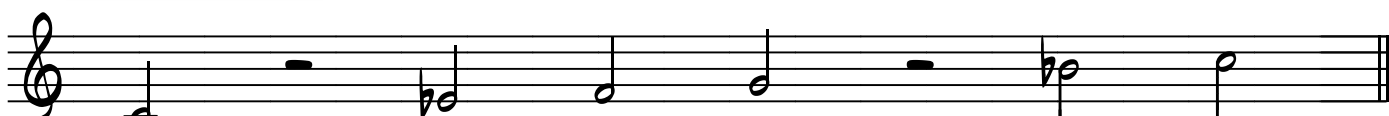
DUR PENTATON



trin: 1 2 3 5 6 8

The Dur Pentaton scale is shown on a treble clef staff with a key signature of one sharp (F#). The notes are: C4 (quarter), D4 (quarter), E4 (quarter), a whole rest (quarter), F#4 (quarter), G4 (quarter), a whole rest (quarter), and C5 (half).

MOL PENTATON



trin: 1 b3 4 5 b7 8

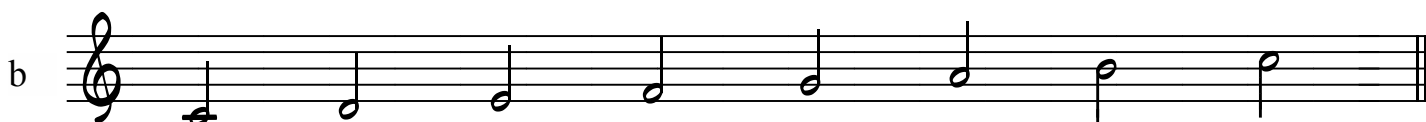
The Mol Pentaton scale is shown on a treble clef staff with a key signature of one sharp (F#). The notes are: C4 (quarter), a whole rest (quarter), E4 (quarter with a flat), F#4 (quarter), G4 (quarter), a whole rest (quarter), A4 (quarter with a flat), and C5 (half).

Opgave 1:

Melodien modulerer fra G-dur til E-mol. Hvilket løst fortegn kan vi vente?
Tegn det ind.



Melodien modulerer fra C-dur til A-mol. Hvilket løst fortegn kan vi forvente?
Tegn det ind.



Melodien modulerer fra Eb-dur til C-mol. Hvilket løst fortegn kan vi forvente?
Tegn det ind.



Melodien modulerer fra C-dur til C-mol. Hvilke(t) løst (løse) fortegn kan vi forvente?
Tegn det (dem) ind.



Opgave 2

Hvilken mol-toneart befinder vi os i?

